



ACADEMIC ARTICULATION AGREEMENT

Associate in Science in Nursing at Berkshire Community College, Pittsfield, MA and BS in Nursing (RN- BSN Program) at Elms College, Chicopee, MA

The above institutions hereby enter into an agreement for the transfer of Berkshire Community College graduates from the *A.S. in Nursing* degree program into the Elms College RN- BSN program.

Objectives of this Agreement:

1. To attract qualified candidates from Berkshire Community College (BCC) to the fully online RN-BSN programs offered by Elms College.
2. To provide program information and procedural guidelines for students at BCC who plan to enroll in the RN-BSN program at Elms College.
3. To promote a seamless transition for applicants with no admission fee, goal statement, resume or references required. Students complete an online application and submit official transcripts and a copy of their nursing license. (*Massachusetts Independent College Transfer Guarantee Memorandum of Agreement: NEBHE, AICUM, and MACC*)
4. To encourage academic coordination, collaboration, and joint academic advising between the faculty in the BCC School of Nursing, Health and Wellness and the Elms College School of Nursing.
5. To offer a RN-BSN-MSN pathway with the completion of six Elms graduate credits in the RN-BSN program.

Stipulations of this Agreement:

1. Elms College will provide the opportunity for BCC students to enroll in the 12-month online accelerated bachelor's in nursing degree programs in fall (September), spring (January) or summer (May).
2. Students in the BCC Associate Degree in Nursing Program will receive a letter of conditional acceptance in the first semester of their second/senior year that they will be accepted into the Elms RN to BSN online degree completion program upon finishing their A.D.N. with an overall GPA of 2.5 and will have junior status upon matriculation.
3. This agreement will apply to Berkshire Community College transfer students who have completed an associate degree in nursing and are licensed, or will be licensed before the completion of 6 course credits to practice as a registered nurse.
4. Elms College will apply the BCC Gen Ed Foundation courses toward the fulfillment of the Elms core. This agreement guarantees that students who earn an associate degree in nursing at Berkshire Community College will enter Elms RN-BSN program with at least 70 transfer credits. Elms will require the student to complete no more than six additional credits for the 34-credit Foundation and will determine which credits/courses shall be required (Religious Studies courses and a capstone course) (*Massachusetts Independent College Transfer Guarantee Memorandum of Agreement: NEBHE, AICUM, and MACC*)
5. Elms College will enable students to transfer without loss of credit counting toward graduation, provided that any minimum course GPA requirements of Elms are met. Whether the credits are applied to a major, general education core or electives will be determined by Elms. All institutional minimum grade requirements for transfer credit will be clearly stated and available to all prospective BCC students. (*Massachusetts Independent College Transfer Guarantee Memorandum of Agreement: NEBHE, AICUM, and MACC*)
6. Transfer students to the Elms College RN-BSN program may transfer up to a maximum of 90 credits for which students have achieved a "C" grade or better from Berkshire Community College. Elms College requires that a minimum of 30 credits be Elms credits earned as a matriculated Elms College student.
7. Course grades below a C may transfer if they are part of the Gen Ed Foundation and students have an overall GPA of 2.0 or better. (*Massachusetts Independent College Transfer Guarantee Memorandum of Agreement: NEBHE, AICUM, and MACC*)
8. Berkshire Community College students will be given transfer credit for satisfactorily completing Elms College core requirements, general education requirements, and any acceptable equivalent RN-BSN program requirements, up to the maximum allowed for

transfer or necessary to satisfy graduation requirements, at time of admission.

9. Elms College will honor the awarding of credit for prior learning as determined by BCC and will award additional credits through Prior Learning Assessment (PLA) when students demonstrate successful learning outcomes through life and work experience.
(Massachusetts Independent College Transfer Guarantee Memorandum of Agreement: NEBHE, AICUM, and MACC)
10. Elms will provide BCC applicants pre-application and post-transfer robust student support and wrap-around services. *(Massachusetts Independent College Transfer Guarantee Memorandum of Agreement: NEBHE, AICUM, and MACC)*
11. Elms College will provide clear information regarding total cost to complete the baccalaureate. Please see <https://www.elms.edu/ce/tuition-financial-aid/>. (Massachusetts Independent College Transfer Guarantee Memorandum of Agreement: NEBHE, AICUM, and MACC)
12. BCC graduates matriculated in the Elms RN-BSN degree completion program will receive a letter of conditional acceptance into the Master of Science in Nursing degree program after completion of 15 undergraduate credits. Students with an overall GPA of 3.0 may submit an online application for the MSN during the final 15 credits of their RN-BSN program.
13. This articulation agreement will be in effect for three years and will be renewable for another three years by consent of Berkshire Community College and Elms College. This articulation agreement can be reviewed within 90 days after written notice by either party.
14. This articulation agreement will be in force, and should be considered the entire agreement, until superseded by a formal contract between Elms College and Berkshire Community College that explicitly replaces this agreement.

Review and Revision Procedures:

1. Review of this agreement shall take place at least every three years or as needed from the date of the signed agreement.
2. At the request of either party, a review of the contents or implementation of this agreement will be conducted by the programs.
3. Julie Beck, Dean of the School of Nursing at Elms College, and Lori Moon, Dean of the School of Nursing, Health and Wellness at BCC may make changes in the attached list of courses accepted for Elms transfer credit without renegotiating the entire agreement.

Assistance Provisions:

1. Berkshire Community College and Elms College will list this articulation agreement on their websites and in appropriate print documents at their respective institutions.
2. Berkshire Community College and Elms College will collaborate in encouraging qualified students to participate in the RN-BSN program at Elms College by providing the necessary assistance and supports to assure a seamless transition between the two institutions.

Mutual Responsibilities:

1. The Dean of Nursing, Health and Wellness, or other designated advisor, and the Transfer Counselor at BCC will advise students enrolled in the Associate Degree Nursing Program at BCC. The attached list of courses accepted for Elms College transfer credit assures maximum transfer of credits that meet the core requirements of Elms College Bachelor of Science in nursing degree requirements.
2. The Director of the RN-BSN Program at Elms College, in collaboration with staff in the Office of Continuing Education Admissions at Elms College will advise and assist transfer applicants in compiling the required credentials for transfer to the Elms College RN-BSN program.
3. Transfer applicants from Berkshire Community College applying under this agreement shall be eligible for Elms College financial aid as appropriate to the selected RN-BSN program based on full-time or part-time status.
4. The final acceptance of online applicants comes from the Elms College Director of Continuing Education Admissions.



Date:

ELMS COLLEGE

Harry Dumay, Ph.D., MBA



President

BERKSHIRE COMMUNITY COLLEGE

Ellen Kennedy, Ed.D.



President

Joyce L. Hampton, Ed.D.



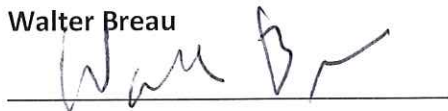
Vice President of Academic Affairs

Laurie Gordy



Vice President of Academic Affairs

Walter Breau




Executive Dean, School of Continuing Education

Julie Beck



Dean, School of Nursing

Lori Moon



Dean, School of Nursing, Health and Wellness

**PATHWAY FROM A.D.N. PROGRAM AT BERKSHIRE COMMUNITY
COLLEGE TO RN – BSN PROGRAM AT ELMS COLLEGE**

Area of Study	Credits	Berkshire Community College	To	Elms College	Degree Requirements Fulfilled by Course(s)
Major Foundational Credits					
BIOLOGY ¹	4	BIO 201 A & P I ** ***	=	BIO 2105 (3) and BIO 2105 L (1) <i>Four credits awarded</i>	<div style="border: 1px solid black; padding: 2px; width: fit-content; margin: 5px auto;">MAJOR</div> <div style="border: 1px solid black; padding: 2px; width: fit-content; margin: 5px auto;">ELMS CORE</div>
BIOLOGY ¹	4	BIO 202 A & P II **	=	BIO 2106 (3) and BIO 2106 L (1) <i>Four credits awarded</i>	<div style="border: 1px solid black; padding: 2px; width: fit-content; margin: 5px auto;">MAJOR</div> <div style="border: 1px solid black; padding: 2px; width: fit-content; margin: 5px auto;">ELMS CORE</div>
BIOLOGY ²	4	BIO 207 Microbiology**	=	BIO 3300 Microbiology (3) BIO 3300L Microbiology (1) <i>Four credits awarded</i>	<div style="border: 1px solid black; padding: 2px; width: fit-content; margin: 5px auto;">MAJOR</div>
ENGLISH ³	3	ENG 101, 102, 103 English Composition/ Writing	=	ENG 1001 Rhetoric (3) <i>Three credits awarded</i>	<div style="border: 1px solid black; padding: 2px; width: fit-content; margin: 5px auto;">ELMS CORE</div>

HUMANITIES ³ ELECTIVE	3	ENG 215, 216, 217, 217H, 225, 226, 228, 231, 232, 241, 242, 245, 255, 297	=	English Literature Requirement <i>Three credits awarded</i>	ELMS CORE
PSYCHOLOGY ³	3	PSY 107 Introductory Psychology **	=	PSY 1001 General Psychology (3) <i>Three credits awarded</i>	ELMS CORE
PSYCHOLOGY ²	3	PSY 204 Human Growth & Development**	=	SWK 2004 Human Behavior in the Social Environment <i>Three credits awarded</i>	MAJOR
SOCIOLOGY ³	3	SOC 105 Introductory Sociology**	=	SOC 1001 Intro Sociology <i>Three credits awarded</i>	ELMS CORE
NURSING ²	40	Nursing block of courses	=	Major transfer nursing courses <i>Forty credits awarded</i>	MAJOR

Major Elective Credits

Students may elect to take the following Humanities courses before starting the RN-BSN program or during the program. These non-nursing core courses are embedded into the Elms RN-BSN program sequence.

HISTORY	3	Any History Course	=	Required core course in history <i>Three credits awarded</i>	ELMS CORE
FINE OR PERFORMING ARTS	3	Any Art, Music, or Theatre Course	=	Required core course in Fine or Performing Arts <i>Three credits awarded</i>	ELMS CORE
RELIGION	3	Any Religion Course		Required course in Religious Studies <i>Three credits awarded</i>	ELMS CORE
PHILOSOPHY	3	Any Philosophy Course	=	Required course in philosophy <i>Three credits awarded</i>	ELMS CORE

**All biological science courses have a five-year currency requirement and PSY 204 has a 7-year currency prior to entering the ADN Program. However, once admitted to the program, pre-requisite and non-nursing courses will not expire unless the student is requesting readmission after a break in curriculum progression.

- 1 Course(s) fulfill requirements in both the major and the core requirements of the degree.
- 2 Course(s) fulfill requirements in the major only.
- 3 Course(s) fulfill requirements in the core requirements of the degree

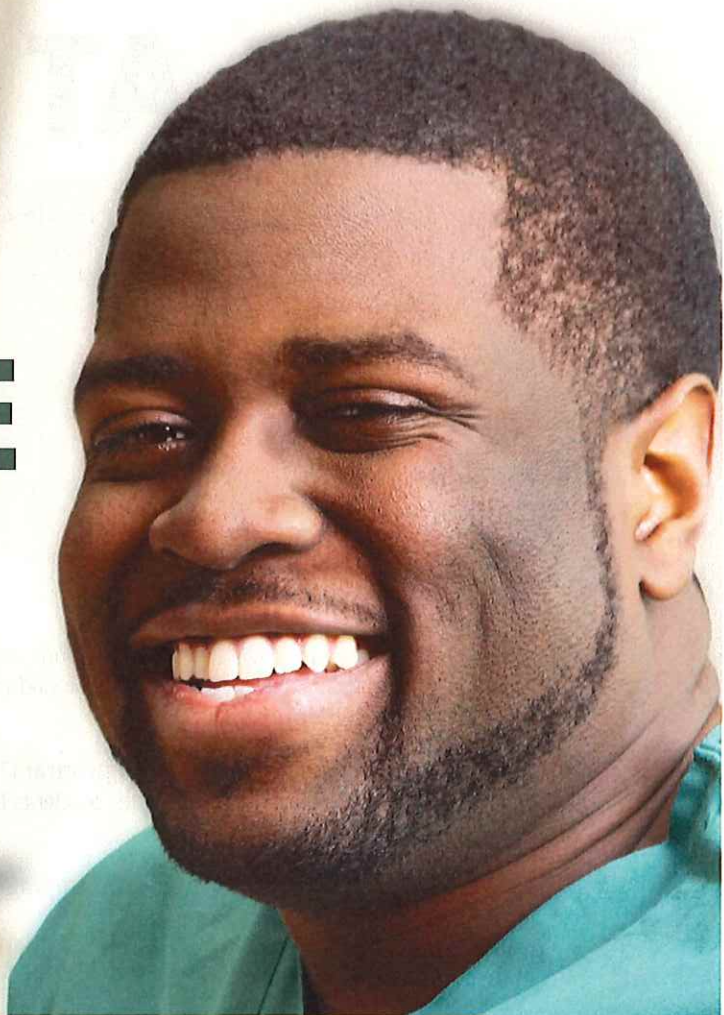


FACTS AT A GLANCE RN-BSN

Degree Completion Program Online



Educating Nurses for over 40 years



30



residency credits required

90%



RECEIVE FINANCIAL AID

Elms is committed to using all possible resources to put together a package that makes sense for you



OVER 1,700 NURSES

graduated since 1982

Degree completion can be finished in as little as

12 MONTHS



6 GRADUATE CREDITS

Graduate credits included may be used towards the MSN degree

FACTS AT A GLANCE

How long does the RN-BSN program take to complete?

The RN-BSN is an accelerated degree completion program taking 12-15 months to complete with acceptance dates of Fall, Spring, and Summer.

Can I transfer credits?

You can transfer up to 90 credits towards your Elms RN-BSN degree.

How many residency credits are required?

Thirty (30) residency credits are required.

What are the advantages to an Elms program?

- No in-person clinicals required
- Individualized attention
- Online support from faculty, advisors, coordinators, and peers
- Online tutoring services
- Benefit of campus resources
- Social interactions
- Smaller Faculty/Student ratio

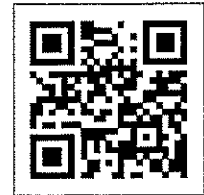
What is the program format?

Elms' RN-BSN degree program is delivered in an online format utilizing asynchronous and synchronous modalities with an individualized advising approach. You and your peers will progress through the program together in a supportive group.

What is the course schedule for the RN-BSN program?

RN-BSN program courses are eight weeks in length. Students take approximately two courses per eight week session.

During each semester (fall, spring, and summer) there are two eight week sessions.



You do not need your RN License to start. We will work with you as you study for your NCLEX-RN.

Graduates of the RN-BSN program have direct acceptance into the MSN program.

What is the employment rate for Elms RN-BSN graduates?

Elms College RN-BSN graduates have been very successful in finding employment. With over 1,700 graduates from the nursing program, our networking in the area for employment is very strong.

Why is it important to get my BSN in Nursing?

A career in nursing is one of those most sought with the growing demand for skilled, trained and degreed professionals. The Bureau of Labor Statistics is forecasting the demand for nurses will increase by 16% by the year 2024. An additional level of education means that BSN prepared nurses generally have more opportunities and larger salaries than RNs. There's a large array of jobs for nurses outside of hospitals. Nurses can be educators, consultants, writers, and more, and having a BSN can be the edge you need to get those jobs.

NEW RN-BSN-MSN track

The RN-BSN-MSN track is a program that allows students to seamlessly continue into the MSN program after completion of the BSN. With an additional 12-15 months of study, students can complete the MSN with a specialty focus in Nursing & Health Services Management, Nursing Education, School Nursing, and/or MSN/MBA. The RN-BSN-MSN program design allows students to complete both the BSN and MSN in approximately 24 months.